

## FEATHER-LIGHT STEEL-TOUGH

### Galaxy Series

BMT-G3/088A | 365W

Ideal for C&I Roof Tops/ waterproof membrane Roof/Flat Roof

Galaxy Ultra – The lightweight, high-performance solar panel designed for TPO and PVC roofs. Its innovative no-drill mounting system ensures leak-free, risk-free installation while protecting your roof. Engineered for extreme weather, it withstands hail, strong winds, and heavy loads without compromising efficiency. Modular and integrated, Galaxy Ultra enables fast installation, easy maintenance, and reduced labor costs. Delivering all-weather reliability, maximum energy output, and roof safety, it's the hassle-free solar solution for commercial, industrial, and logistics rooftops.



#### Ultra-lightweight

- The lightest weight is 5.6 kg/m<sup>2</sup>
- Up to 60% lighter than conventional module
- Ideal solution for low-load, Waterproof membrane



#### Fast Installation & Hassle-Free Removal

- Hot-Air Welding for Waterproof Membranes
- Seamless Roof Integration
- No Structural Damage – Hassle-Free Removal
- Membrane-Friendly Design



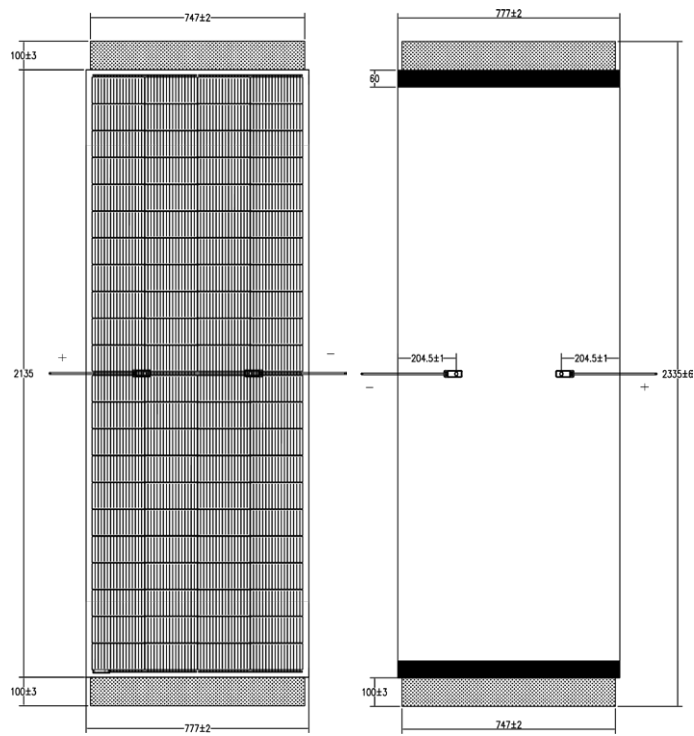
#### High Reliability & Durability

- Wind-Resistant – Withstands 166–183 km/h
- Hail test – Passed 25 mm Impact Test
- Snow Load Ready – Up to 2400 Pa



#### High Power Output

- Premium N-Type TOPCon Cells
- Up to 2% Less Power Loss with Ventilated Design



BMT-G3/088A

Structural Data

BMT-G3/088A

Size	2335±6*777±2*3.5±1mm
Weight	10.2±0.7kg
Unit Weight	5.6±0.4kg/m²
Front Surface	1.6mm tempered glass
Cell Type	N-Type TOPCon Half Cells (88pcs)
Frame	Frameless*

Electrical Data (STC)

Max Power (Pmax)	365W
Power/ m² (W/m² )	201W/m²
Efficiency (%)	20.0%
Voltage at Max Power (Vmpp)	27.53V
Voltage at Open Circuit (Voc)	32.42V
Current at Max Power (Impp)	13.26A
Current at Short Circuit (Isc)	13.87A

Load Capacity

Maximum static load on the front	2400Pa
Maximum static load on rear side	2400Pa

Working Parameters

Maximum System Voltage	1500V
Maximum Fuse Rating Operation	25A
Temperature Range	-40° C ~+85° C
Hail Test	Hail diameter: 25mm Specified speed: 23m/s
The Rated Operating Temperature	45±2°C
Fire-resistant Class	C
Ingress Protection Rating	IP67
Protection Class	II

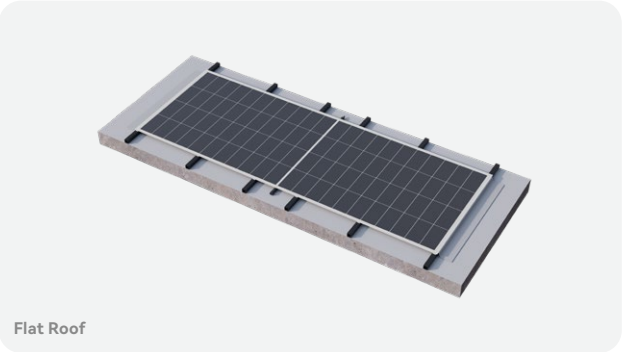
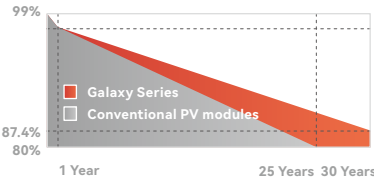
Temperature Parameters

Isc TP	+0.03%/°C
Voc TP	-0.27%/°C
Pmp TP	-0.30%/°C

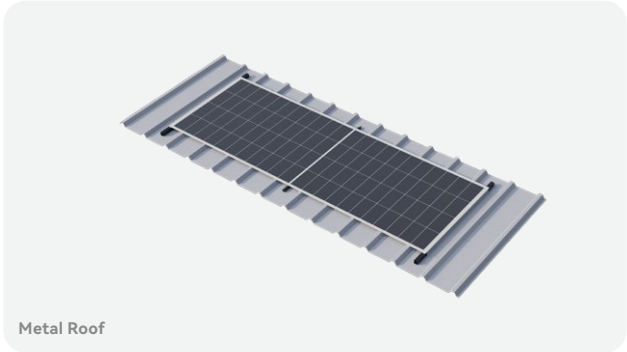
\*With PPO edge protection to reduce the risk of glass damage from corner impacts.

30-year power generation performance guarantee

- ✓ 1% degradation in the first year
- ✓ 15-year product warranty
- ✓ 0.4% decay per year
- ✓ 30-year power guarantee



Flat Roof



Metal Roof