

FEATHER-LIGHT STEEL-TOUGH

Galaxy Series

BMT-G5/144A | 580W

Ideal for C&I Roof Tops/ Patio/Pergola/Shed & Solar Trailer/Flat Roof

Galaxy Series is a lightweight solar panel product designed for industrial and commercial applications. With an ultra-lightweight design and aluminum alloy frame, Galaxy is especially ideal for low load-bearing and poor waterproofing roofs while ensuring power generation efficiency. It is worth mentioning that the 1.6mm ultra-thin glass is added to Galaxy, which greatly helps improve its ability to resist strong impact from wind and hail, bringing durability and safety to buildings with all-weather protection. Furthermore, various installation methods and the integrated design also enable rapid and streamlined installation, resulting in significant cost savings out of reduced labor time.



Ultra-lightweight

- Up to 40% lighter than conventional module
- Suitable for roofs with a low load-bearing capacity



Various & Quick Installation

- No roof penetration
- 3 Min/pcs Rapid Installation
- Clamps for metal roofs
- Glue for flat roofs



High Reliability

- Wind¹ and hail² impact resistance
- Maximum static snow load up to 5400Pa
- Aluminum alloy frame
- Enhanced capability for self-cleaning
- Reduced fire risks

¹Third-party lab test from CTC

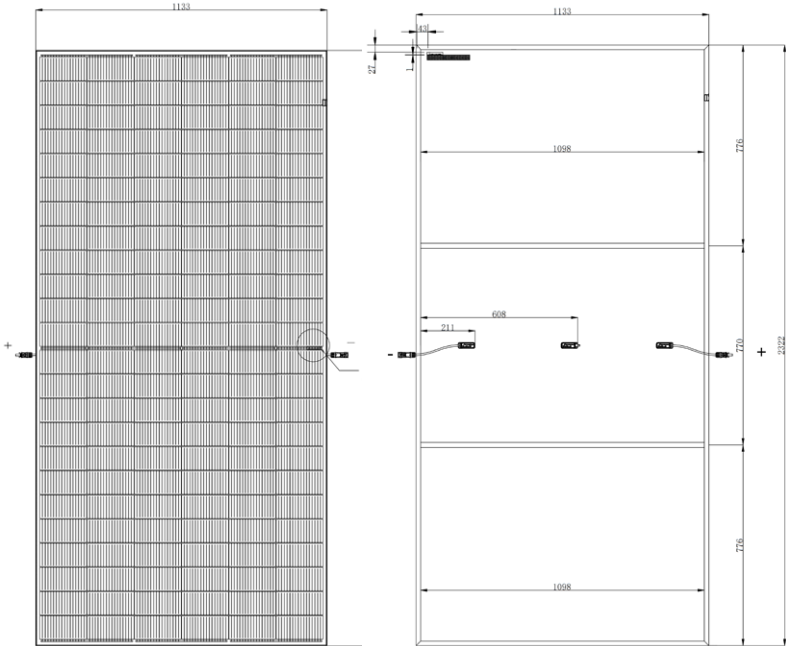
²Third-party TUV lab: report number CN22Z6P8 001



High Power Generation

- High-efficiency TOPCon cells
- 2% less generation loss³ with ventilation design
- Up to 220W per square meter of power generation

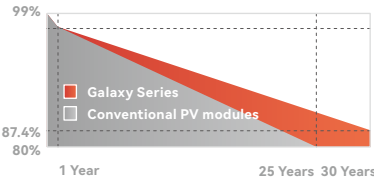
³Based on internal lab test



BMT-G5/144A

30-year power generation performance guarantee

- ✓ 1% degradation in the first year
- ✓ 15-year product warranty
- ✓ 0.4% decay per year
- ✓ 30-year power guarantee



Operation Conditions

Maximum System Voltage	1500V
Maximum Fuse Rating Operation	25A
Temperature Range	-40° C ~+85° C
Hail Test	Hail diameter: 25mm Specified speed: 23m/s
The Rated Operating Temperature	45±2°C
Fire-resistant Class	C
Protection Class	II

Temperature Coefficient

Isc TP	+ 0.029 %/°C
Voc TP	- 0.27 %/°C
Pmp TP	- 0.30 %/°C

Structural Data

BMT-G5/144A

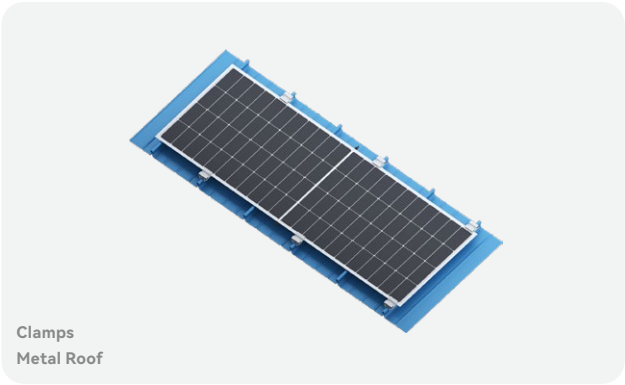
Size	2322±2*1133± 2 *28.5±1mm
Weight	19.5±1kg
Unit Weight	7.4±0.4kg/m²
Front Surface	1.6mm tempered glass
Cell Type	N-Type TOPCon Half Cells (144pcs)
Frame	Aluminum Alloy

Electrical Data (STC)

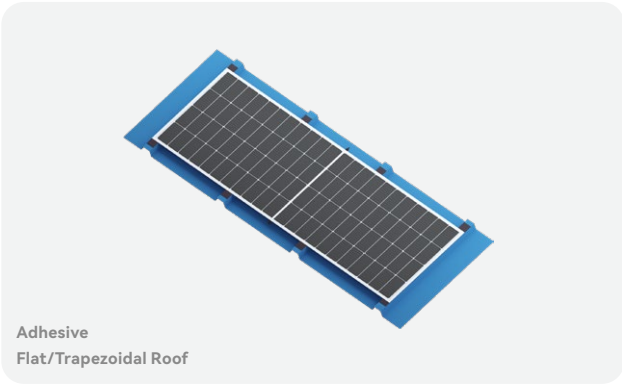
Max Power (Pmax)	580W
Power/ m² (W/ m²)	220W/m²
Efficiency (%)	22%
Voltage at Max Power (Vmpp)	44.08V
Voltage at Open Circuit (Voc)	52.27V
Current at Max Power (Impp)	13.16A
Current at Short Circuit (Isc)	13.82A

Load Capacity

Maximum static load on the front	5400Pa
Maximum static load on rear side	2400Pa



Clamps
Metal Roof



Adhesive
Flat/Trapezoidal Roof